

This Page Is Inserted by IFW Operations
and is not a part of the Official Record

BEST AVAILABLE IMAGES

Defective images within this document are accurate representations of the original documents submitted by the applicant.

Defects in the images may include (but are not limited to):

- BLACK BORDERS
- TEXT CUT OFF AT TOP, BOTTOM OR SIDES
- FADED TEXT
- ILLEGIBLE TEXT
- SKEWED/SLANTED IMAGES
- COLORED PHOTOS
- BLACK OR VERY BLACK AND WHITE DARK PHOTOS
- GRAY SCALE DOCUMENTS

IMAGES ARE BEST AVAILABLE COPY.

**As rescanning documents *will not* correct images,
please do not report the images to the
Image Problem Mailbox.**

PCT

WORLD INTELLECTUAL PROPERTY ORGANIZATION
International Bureau



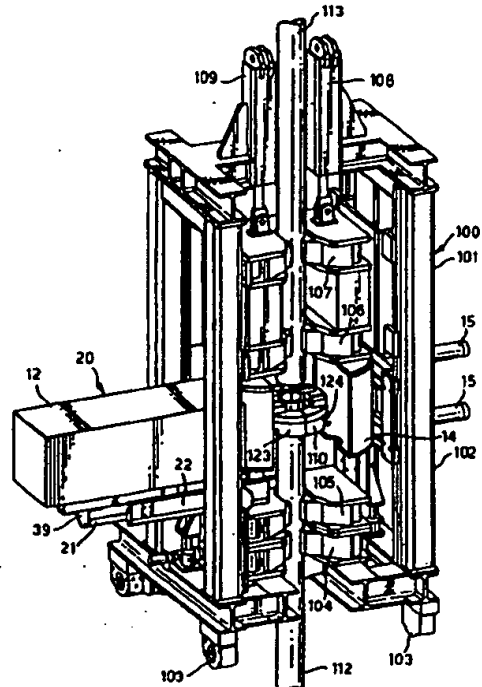
INTERNATIONAL APPLICATION PUBLISHED UNDER THE PATENT COOPERATION TREATY (PCT)

<p>(51) International Patent Classification 6 : B23K 20/02, 1/002</p>	<p>A1</p>	<p>(11) International Publication Number: WO 99/08828 (43) International Publication Date: 25 February 1999 (25.02.99)</p>
<p>(21) International Application Number: PCT/EP98/05475 (22) International Filing Date: 19 August 1998 (19.08.98) (30) Priority Data: 9717438.7 19 August 1997 (19.08.97) GB 9718585.4 3 September 1997 (03.09.97) GB 9719230.6 11 September 1997 (11.09.97) GB (71) Applicant (for all designated States except US): SHELL INTERNATIONALE RESEARCH MAATSCHAPPI B.V. [NL/NL]; Carel van Bylandtlaan 30, NL-2596 HR The Hague (NL). (72) Inventor; and (75) Inventor/Applicant (for US only): PIETRAS, Bernd-Georg [DE/DE]; Sandriedeweg 12, D-30900 Wedemark (DE).</p>	<p>(81) Designated States: AL, AM, AT, AU, AZ, BA, BB, BG, BR, BY, CA, CH, CN, CU, CZ, DE, DK, EE, ES, FI, GB, GE, GH, GM, HR, HU, ID, IL, IS, JP, KE, KG, KP, KR, KZ, LC, LK, LR, LS, LT, LU, LV, MD, MG, MK, MN, MW, MX, NO, NZ, PL, PT, RO, RU, SD, SE, SG, SI, SK, SL, TJ, TM, TR, TT, UA, UG, US, UZ, VN, YU, ZW, ARIPO patent (GH, GM, KE, LS, MW, SD, SZ, UG, ZW), Eurasian patent (AM, AZ, BY, KG, KZ, MD, RU, TJ, TM), European patent (AT, BE, CH, CY, DE, DK, ES, FI, FR, GB, GR, IE, IT, LU, MC, NL, PT, SE), OAPI patent (BF, BJ, CF, CG, CI, CM, GA, GN, GW, ML, MR, NE, SN, TD, TG).</p> <p>Published With international search report. Before the expiration of the time limit for amending the claims and to be republished in the event of the receipt of amendments.</p>	

(54) Title: APPARATUS FOR AMORPHOUS BONDING OF TUBULARS

(57) Abstract

An apparatus for amorphous bonding of tubulars comprises a clamping assembly (104, 105, 106, 107), which clamping assembly is adapted to maintain a pair of tubulars (112, 113) of which the ends are to be bonded in substantial axial alignment; a machining tool (110) comprising a body with a pair of spaced apart cutting units which, in use, prepare said adjacent ends of said tubulars such that the prepared ends are substantially parallel to each other; and an induction coil for heating the prepared ends of the tubulars while the prepared ends are pressed towards each other and the tubulars are maintained in substantial axial alignment by the clamping assembly.



FOR THE PURPOSES OF INFORMATION ONLY

Codes used to identify States party to the PCT on the front pages of pamphlets publishing international applications under the PCT.

AL	Albania	ES	Spain	LS	Lesotho	SI	Slovenia
AM	Armenia	FI	Finland	LT	Lithuania	SK	Slovakia
AT	Austria	FR	France	LU	Luxembourg	SN	Senegal
AU	Australia	GA	Gabon	LV	Latvia	SZ	Swaziland
AZ	Azerbaijan	GB	United Kingdom	MC	Monaco	TD	Chad
BA	Bosnia and Herzegovina	GE	Georgia	MD	Republic of Moldova	TG	Togo
BB	Barbados	GH	Ghana	MG	Madagascar	TJ	Tajikistan
BE	Belgium	GN	Guinea	MK	The former Yugoslav Republic of Macedonia	TM	Turkmenistan
BF	Burkina Faso	GR	Greece	ML	Mali	TR	Turkey
BG	Bulgaria	HU	Hungary	MN	Mongolia	TT	Trinidad and Tobago
BJ	Benin	IE	Ireland	MR	Mauritania	UA	Ukraine
BR	Brazil	IL	Israel	MW	Malawi	UG	Uganda
BY	Belarus	IS	Iceland	MX	Mexico	US	United States of America
CA	Canada	IT	Italy	NE	Niger	UZ	Uzbekistan
CF	Central African Republic	JP	Japan	NL	Netherlands	VN	Viet Nam
CG	Congo	KE	Kenya	NO	Norway	YU	Yugoslavia
CH	Switzerland	KG	Kyrgyzstan	NZ	New Zealand	ZW	Zimbabwe
CI	Côte d'Ivoire	KP	Democratic People's Republic of Korea	PL	Poland		
CM	Cameroon	KR	Republic of Korea	PT	Portugal		
CN	China	KZ	Kazakhstan	RO	Romania		
CU	Cuba	LC	Saint Lucia	RU	Russian Federation		
CZ	Czech Republic	LI	Liechtenstein	SD	Sudan		
DE	Germany	LK	Sri Lanka	SE	Sweden		
DK	Denmark	LR	Liberia	SG	Singapore		
EE	Estonia						

APPARATUS FOR AMORPHOUS BONDING OF TUBULARS

Background of the Invention

This invention relates to an apparatus for amorphous bonding of tubulars.

5 Amorphous bonding is used to join components in the automotive industry and, as disclosed in European patent application No. 418606, to join tubulars. Typically the surfaces to be joined are ground so that they are substantially parallel. A film of a special alloy is then inserted between the surfaces and the components are
10 urged together and heat applied to the vicinity of the joint for a predetermined time. The finished joint is extremely strong and the metallurgical properties of the joint are relatively homogeneous throughout.

15 At the present time the surfaces to be joined are ground into parallelism by a machine tool having a working head with a grinding wheel disposed to either side thereof. In use, the machine tool is guided between the surfaces to be ground on a track.

20 There is a long standing need to also use amorphous bonding to join tubulars for use in the construction, maintenance and repair of oil and gas wells. It will be appreciated that this raises many technical problems both because of the extremely hazardous vapours associated with drilling and the fact that much of our oil and gas
25 reserves are accessed from offshore platforms which sway back and forth in heavy seas and inclement weather.

The problem which the present invention addresses is how to prepare and align the surface of tubulars, which may vary from 15 cm to 105 cm in diameter prior and
30 during the amorphous bonding process.

The prior art solution is not feasible for several reasons. Firstly, if small diameter grinding wheels are used then it is virtually impossible to move the grinding

tool around the tubulars with sufficient precision bearing in mind that onshore drilling rigs and offshore platforms are mobile.

5 If large diameter grinding wheels are used the head of the machine tool becomes extremely large and the difficulties associated with operating the machine tool at a well head become daunting.

The present invention approaches the problem of aligning and preparing the tubular ends and of aligning the amorphous bonding apparatus from a different angle.

10 Summary of the Invention

The present invention provides an apparatus for amorphous bonding of tubulars, the apparatus comprising

- 15 - a clamping assembly, which clamping assembly is adapted to maintain a pair of tubulars of which the ends are to be bonded in substantial axial alignment;
- a machining tool comprising a body with a pair of axially spaced apart cutting units which, in use, prepare said adjacent ends of said tubulars such that the
- 20 prepared ends are substantially parallel to each other; and
- an induction coil for heating the prepared ends of the tubulars while the prepared ends are pressed towards each other and the tubulars are maintained in substantial
- 25 axial alignment by the clamping assembly.

Preferably, each cutting unit comprises at least two cutters, one of which may be wider than the other and which may be arranged to finish a cut started by a narrower leading cutter.

30 The body may be designed to be slid over the end of a tubular or may be a two piece structure adapted to be mounted around the tubulars to be cut. This two piece structure is preferred as it enables a section of pipe containing a faulty joint to be rapidly cut-out.

35 It is observed that it is known to cut pipe using a Split Frame Cutting Device such as manufactured and sold by Wachs Limited of Macclesfield, Cheshire, SK11 7BD,

England. This known cutting device essentially comprises two halves which can be mounted around a tubular. The known cutting device only comprises a single cutter which is actuated by a pneumatic, hydraulic or electric power source to cut the tubular.

Preferably, the tubulars are cut simultaneously by the apparatus according to the invention although they could be cut sequentially. It is also contemplated that cutting of one tubular may commence shortly before the cutting of the other tubular. This later arrangement has the advantage that the initial cut in the lower tubular locates the associated cutting element and thereby acts as a guide when the cutting of the other tubular commences.

It also preferred that the induction coil is equipped with a alignment device for gripping at least one of said tubulars, which alignment device is held in a fixed relation with respect to said induction coil and that the alignment device comprises wheels which run on rails, which rails are mounted on the support frame.

Preferably said alignment device comprises spring loaded arms, which arms comprise centering rollers.

Alternatively the alignment device comprises eccentric wheels for which are drivable by a motor in a synchronised manner, and the alignment device comprises two halves, each half comprising at least one eccentric roller.

Furthermore it is preferred that the induction coil comprises at least two separate and distinct parts and that the apparatus further includes an enclosure having at least two separate and distinct parts, which parts each contain one of said parts of the induction coil and which parts are, in use, urged together to form a sealed shield gas chamber around the heating coil and the ends of the bonded tubulars during the amorphous bonding process.

Brief description of the drawings

For a better understanding of the present invention reference will now be made, by way of example, to the accompanying drawings, in which:-

5 Fig. 1 is a perspective view of one embodiment of an apparatus in accordance with the present invention, showing the components just prior to a cutting operation;

10 Fig. 2 is a schematic side view of the cutting apparatus illustrating the principle of the cutting procedure according to the present invention;

Fig. 3 is a schematic view of the cutting apparatus of Fig. 2 being used to remove a section of tubing containing a faulty joint;

15 Fig. 4 is a vertical section through part of the apparatus shown in Fig. 1 at the completion of a cutting operation;

Fig. 5 is an enlarged view, partly in cross section, of the heating coil alignment assembly of the amorphous bonding machine as shown in Fig. 1;

20 Fig. 6 is an enlarged underneath plan view of a part of the heating coil alignment centering assembly of the amorphous bonding apparatus as shown in Fig. 1;

25 Fig. 7 is a side view of a second embodiment of a heating coil alignment assembly of an apparatus according to the present invention; and

Fig. 8 is a top plan view of the apparatus shown in Fig. 7.

Fig. 9 is a detailed view, to an enlarged scale, of the split heating coil of the apparatus of Fig. 1;

30 Fig. 10 is a view, to a further enlarged scale, of part of the view shown in Fig. 9;

Fig. 11 is a view similar to Fig. 10 but showing an alternative heating coil assembly in an open position; and

35 Fig. 12 is a view similar to Fig. 11 showing the heating coil assembly in a clamped position.

Detailed description of the Invention

Referring to Fig. 1 of the drawings, there is shown an amorphous bonding apparatus according to the invention.

5 The apparatus, which is generally identified by reference numeral 100, comprises a support frame 102 which is mounted on rollers 103 which run on rails that lie in channels (not shown).

10 The support frame 102 is provided with a clamping assembly comprising four clamps 104, 105, 106, 107 arranged as a lower pair 104, 105 and an upper pair 106, 107. The clamps 106, 107 can be raised and lower by two pistons and cylinder assemblies 108, 109.

15 A pipe cutter 110 is mounted on a support which is mounted on the support frame 102. The pipe cutter 110 will be described in greater detail hereinafter. However, at this point it should be understood that in use, a lower tubular 112 will be held in slips (not shown). The top of the lower tubular 112 is firmly held by clamps 104 and 105 whilst an upper tubular 113 is firmly held by
20 clamps 106, 107 in substantial axial alignment with the lower tubular 112.

The position of the clamps 106, 107 in the horizontal plane can be adjusted by micro adjusters to ensure
25 substantial axial alignment of the upper tubular 113 with the lower tubular 112.

Prior to the cutting operation the piston and cylinder assemblies 108, 109 are actuated so that the upper tubular 113 is lowered from the position shown in
30 Fig. 1 until the adjacent faces of the lower tubular 112 and the upper tubular 113 are about 20 mm apart.

At this time the pipe cutter 110 is advanced and mounted around the joint as shown. The pipe cutter 110 is a modified Wachs Split Frame Cutter as supplied by Wachs
35 Limited of Macclesfield, Cheshire, SK11 7BD, England.

The standard Wachs Split Frame Cutter only has a single cutting unit which, when the device is actuated, cuts the pipe in one place.

5 In contrast, as shown in Fig. 2, the pipe cutter 110 of the apparatus according to the present invention has two cutting units 116, 117 which are spaced apart by about 40 mm but which are mounted on a common body 118.

10 In order to facilitate the cutting operation each cutting unit 116, 117 is provided with two cutters, one of which is wider than the other. The narrow cutter, for example having a width of 3.6mm is arranged to make the initial cut whilst the wider cutter, which has a width of, for example 4mm, is designed to follow the narrow cutter and perfect the edge.

15 When the pipe cutter 110 is activated it cuts the ends 119, 120 off the lower tubular 112 and upper tubular 113 respectively leaving the surfaces 121 and 122 in the parallelism dictated by the cutting units 116 and 117. It will be appreciated that the surfaces 121 and 122 will be in such parallelism regardless of the orientation of the pipe cutter 110 although good engineering practice requires that the surfaces 121 and 122 should be perpendicular to the longitudinal axis of the lower tubular 112 and upper tubular 113.

20 Once the surfaces 121 and 122 have been prepared a film of a suitable alloy is inserted therebetween. The surfaces 121 and 122 are then pressed together using piston and cylinder assemblies 108, 109 whilst heat is applied to the area of the joint using an induction heater shown in Fig. 5-9. This process forms the amorphous bond which is subsequently tested. Should the joint fail then pipe cutter 110 is remounted on the tubular over the joint and actuated to cut out a tubular section as shown in Fig. 3.

35 Referring now to Fig. 4, the pipe cutter 110 comprises two halves 123 and 124 which are secured to one another circumjacent the lower tubular 112. The pipe

5 cutter 110 comprises a lower member 125 which is provided with a plurality of segments 126 the radial position of which is adjusted by set screws 127. The position of the segments 126 is set so that when the two halves 123 and 124 are secured together the pipe cutter 110 is firmly mounted on the lower tubular 112.

A plurality of rollers 128 are mounted on the lower member 125 and allow a carriage 129 to rotate about the lower tubular 112.

10 Two cutting units 116 and 117 are mounted on the carriage 129. The cutting unit 116 comprises two cutters only one of which is visible in Fig. 4. Similarly the cutting unit 117 comprises two cutters only one of which is visible in Fig. 4.

15 As can be seen in Fig. 4, the cutting unit 116 is spaced further from the carriage 129 than the cutting unit 117.

20 In use the carriage 129 is rotated relative to the lower member 125. This can be achieved in any convenient manner, for example by a small hydraulic motor having its body mounted on the lower member 125 and arranged to rotate a pinion which engages in a track on the carriage 129. As will be appreciated the cutters are advanced radially inwardly as cutting progresses. This can be 25 effected by any convenient advancing mechanism which may be manually or automatically actuated.

Referring to Figs. 5 and 6, there is shown an apparatus for aligning an induction coil with a tubular in accordance with the invention. The apparatus, which is 30 generally identified by reference numeral 20, comprises a first assembly 12 and a second assembly 14.

The second assembly 14 comprises a container 23 containing equipment 24 for producing high current for an induction coil 26, 28. The equipment 24 is rigidly 35 attached to the container 23 which is explosion proof. The container 23 is rigidly attached to a half of an

explosion proof double walled housing 25 which accommodates one half of the induction coil 26, 28.

5 The first assembly 12 comprises the other half of explosion-proof double walled housing 27 and the other half of the induction coil 28. The first assembly 12 is mounted on one end of hydraulic cylinders 15. The other end of the hydraulic cylinders 15 are attached to the support frame 102 (see Fig. 1).

10 The container 23 is mounted on rollers 29 which roll along a track 22 which is rigidly secured to the support frame 102.

15 The container 23 is also rigidly connected to an alignment device 30. The alignment device 30 comprises two arms 31 and 32, each arm having a centering roller 33 and 34 respectively. The arms 31 and 32 are movably connected to the housing 35 of the alignment device 30 about pins 36 and 37 respectively. The arms 31 and 32 are biased towards each other by springs (not shown). A further centering roller 38 is provided on the housing 35
20 between the arms 31 and 32.

A hydraulic cylinder 21 is attached at one end to the container 23 by a lug 39 and at the other end to the support frame 102.

25 In use, the support frame 102 is pushed over the lower pipe 112 as shown in Fig. 1. The upper pipe 113 is lowered into position. At this stage the cutting operations to the ends of the lower and upper pipes 112, 113 may be carried out. When it is desired to join the lower and upper pipes 112, 113 the second assembly 14 is
30 advanced towards the lower pipe 112 using hydraulic piston 21. The second assembly 14 rolls along track 22 until all three rollers 33, 34, 38 engage the lower pipe 112 (as shown in Fig. 6). As the second assembly 14 advances towards the lower and upper pipes 112, 113, the
35 rollers 33 and 34 on the ends of the arms 31 and 32 roll over the lower pipe 112. The second assembly 14 is now maintained in a fixed position with respect to the lower

pipe 112. The first assembly 12 can now be moved into engagement with second assembly 14 using pistons 15 (shown in Fig. 1). The two halves of the explosion proof housing 25, 27 and the two halves of the induction coil 26, 28 co-operate to seal off the volume surrounding the induction coil 26, 28 and to allow the current to flow through the induction coil 26, 28. The bonding process now begins. After the bonding process, pistons 15 are now retracted retracting the first assembly 12. Piston 21 is extended to retract the second assembly 14. The alignment device 30 is released from engagement with the lower tubular 112.

Reference will now be made to Figs 7 and 8 in which there is shown a second embodiment of the heating coil and alignment device according to the invention generally identified by reference numeral 220. The device 220 comprises a first assembly 212 and a second assembly 214.

The second assembly 214 comprises a container 223 containing apparatus for producing high current for an induction coil 226, 228. The device is rigidly attached to the container 223. The container 223 is rigidly attached to one half of an explosion proof housing 225 which contains one half of the induction coil 226.

The first assembly 212 comprises the other half of the explosion proof housing 227 and the other half of the induction coil 228. The first assembly 212 is mounted on hydraulic cylinders, which are attached to the support frame 102.

The second assembly 214 is movable along a track (not shown). The container 223 is mounted on rollers 229 which roll along a track in a similar fashion the first embodiment.

Half of an alignment device 230 is rigidly mounted beneath the base 231 of the half of the explosion proof housing 225. The other half of the alignment device 240 is rigidly mounted beneath the base 241 of the other half of the explosion proof housing 227. Each half of the

alignment device 230, 240 comprises two eccentric wheels 232, 233, 242, 243. Each eccentric wheel has a hole lined with splines with which a splined shaft 234, 235, 244, 245 engages. The half of the alignment device 230 is provided with hydraulic pistons 236, 237 which are pivotally mounted on lugs 238 and 239. The other half of the alignment device 240 is provided with lugs 246 and 247 for retaining said hydraulic pistons 236, 237.

In use, the support frame 102 is put into position and pushed over the lower pipe 112. The upper pipe 113 is lowered into position. At this stage various operations to prepare the ends of the lower and upper pipes as disclosed in Figs. 2-4 may be carried out. The second assembly 214 is then brought closer to the lower pipe 112 using a hydraulic piston (not shown). The second assembly 214 rolls along the track until the eccentric wheels 232 and 233 contact the lower pipe 112. The first assembly 212 is also brought closer to the lower pipe 112 using hydraulic pistons (not shown). The hydraulic pistons 236, 237 are swung over the lugs 246, 247 and hydraulic pressure is applied to the pistons to bring the two halves of the device 230, 240 together. The splined shafts 234, 235, 244 and 245 are rotated by a hydraulic motor (not shown) in order to centre the device and hence the induction coil 226, 228 in relation to the lower pipe 112, whilst retaining parallelism between the lower and upper pipes 112, 113.

The bonding process now begins. After the bonding process the pistons 236, 237 are extended and swung free of the lugs 246, 247, pistons (not shown) are also retracted to retract the first and second assemblies 212 and 214.

Other modifications and/or improvements are envisaged, such as the container 23, 223 may be explosion proof and/or double walled.

Referring to Figs. 9 and 10 there is shown that each half 310, 311 of an enclosure surrounding tubular 112

(and also 113) contains separate and distinct segments 313, 314, 315 of a coil 316.

5 The coil 316 comprises a heating element 317, the radially outer surface of which is provided with a cooling channel 318. The heating element 317 is connected to a high frequency oscillator 319 by rods 320 and 321.

Rod 320 is welded to a segment 322 which is provided with an ear 323. The ear 323 is made of solid brass and has a contact face 324 which is coated with silver.

10 The segment 315 has an ear 325, 326 at each end thereof. Each ear 325, 326 is welded to the segment 315 and is made of solid brass having a contact face 327, 328 coated with silver. Finally, one end of segment 313 is connected to rod 321 whilst the other end is provided with ear 329 which has a contact face 330 which is silvered.

15 As can be seen from Fig. 10 the ears 323, 325; 326, 329 are urged together. This is extremely important for several reasons, in particular, to minimise electrical resistance and to inhibit sparking.

20 Turning back to Fig. 10, ear 323 is supported by an insulator 331 which is mounted on the end of a threaded rod 332 which is slidably mounted in a housing 333. The insulator 331 can be advanced and retracted by rotation of a set screw 334. A nut 335 mounted on the threaded rod 332 limits the movement in one direction.

25 Ear 329 is supported in a similar manner to ear 323 and the support arrangement will not be discussed in detail.

30 Ear 325 is biased against ear 323 by an arrangement which comprises an insulator 336 and a piston rod 337 which is slidably mounted in a sleeve 338 fast with the half 311. The other end of the piston rod 337 is connected to a piston 339 which can be advanced by introducing hydraulic fluid into chamber 340.

35 Ear 326 is associated with a similar arrangement to ear 325 and this will not be described in detail.

In use, after the halves 310, 311 have been fastened together the ears 323, 325; 326, 329 will be lying opposite one another. At this stage hydraulic fluid is admitted to the chamber 340 (and chamber 341) to advance the respective piston rods and urge the ears against one another with the required force.

Once the required force has been applied heating can commence and the amorphous bond completed.

In the embodiment described the cooling channel 318 is formed by inlet channel 342, circumferential channels 343, 344 and 345 and outlet channel 346, water tight joints being formed between the circumferential channels 343 and 344, and 344 and 345 when the halves 310, 311 are joined. However, if desired, the segments 343 and 345 in half 310 could be cooled by one water cooling system and the segment 344 in the other half by a separate and distinct water cooling system.

Figures 11 and 12 show an alternative embodiment of the split heating coil. Parts have functions similar to parts shown in Figures 9 and 10 have been identified by similar reference numerals but in the "400" series.

The main difference is in the means to urge the ears 423, 425; 426, 429 together. In this case the means comprises a base plate 450 which is bolted to the bottom of the half 410. A fixed support 451 is mounted on the base plate 450 and supports the ear 423. A movable support 452 is rotatably mounted about a post 453 which projects upwardly from the base plate 450.

A hydraulic piston-and-cylinder is mounted beneath the base plate 450 and is arranged to pivot the movable support 452 between its open position shown in Fig. 11 and its closed position shown in Fig. 12. This arrangement has the advantage that the forces holding the ears together do not act between the two halves 410, 411.

In the embodiment shown in Figs. 11 and 12 the water cooling arrangement for the coil has been omitted for clarity.

C L A I M S

1. An apparatus for amorphous bonding of tubulars, the apparatus comprising
- a clamping assembly, which clamping assembly is adapted to maintain a pair of tubulars of which the ends are to be bonded in substantial axial alignment;
 - a machining tool comprising a body with a pair of axially spaced apart cutting units which, in use, prepare said adjacent ends of said tubulars such that the prepared ends are substantially parallel to each other; and
 - an induction coil for heating the prepared ends of the tubulars while the prepared ends are pressed towards each other and the tubulars are maintained in substantial axial alignment by the clamping assembly.
2. The apparatus of claim 1, further comprising a support frame which carries the clamping assembly, the machining tool and the induction coil.
3. An apparatus as claimed in claim 1, wherein each cutting unit comprises at least two cutters.
4. An apparatus as claimed in claim 3, wherein one of said cutters is wider than the other and is arranged to finish a cut started by a leading cutter.
5. An apparatus as claimed in claims 1, 2 or 3, wherein said body is a two piece structure adapted to be mounted around the tubulars to be cut.
6. An apparatus as claimed in claim 6, wherein said body is movably mounted on the support frame.
7. An apparatus as claimed in claim 1, wherein the induction coil is equipped with an alignment device for gripping at least one of said tubulars which alignment device is held in a fixed relation with respect to at least part of said induction coil.

8. An apparatus as claimed in claim 7, wherein the alignment device comprises a section which is mounted on wheels which run on rails that are mounted on the support frame.
- 5 9. An apparatus as claimed in claim 7, wherein the alignment device comprises spring loaded arms, which arms comprise centering rollers.
- 10 10. An apparatus as claimed in claim 7, wherein the alignment device comprises eccentric rollers which are drivable by a motor in a synchronised manner, and the alignment device comprises two halves, each half comprising at least one eccentric roller.
- 15 11. An apparatus as claimed in claim 1, wherein the induction coil comprises at least two separate and distinct parts.
- 20 12. An apparatus as claimed in claim 11, further including an enclosure having at least two separate and distinct parts, which parts each contain one of said parts of the induction coil and which parts are, in use, urged together to form a sealed shield gas chamber around the heating coil and the ends of the bonded tubulars during the amorphous bonding process.

Fig. 1.

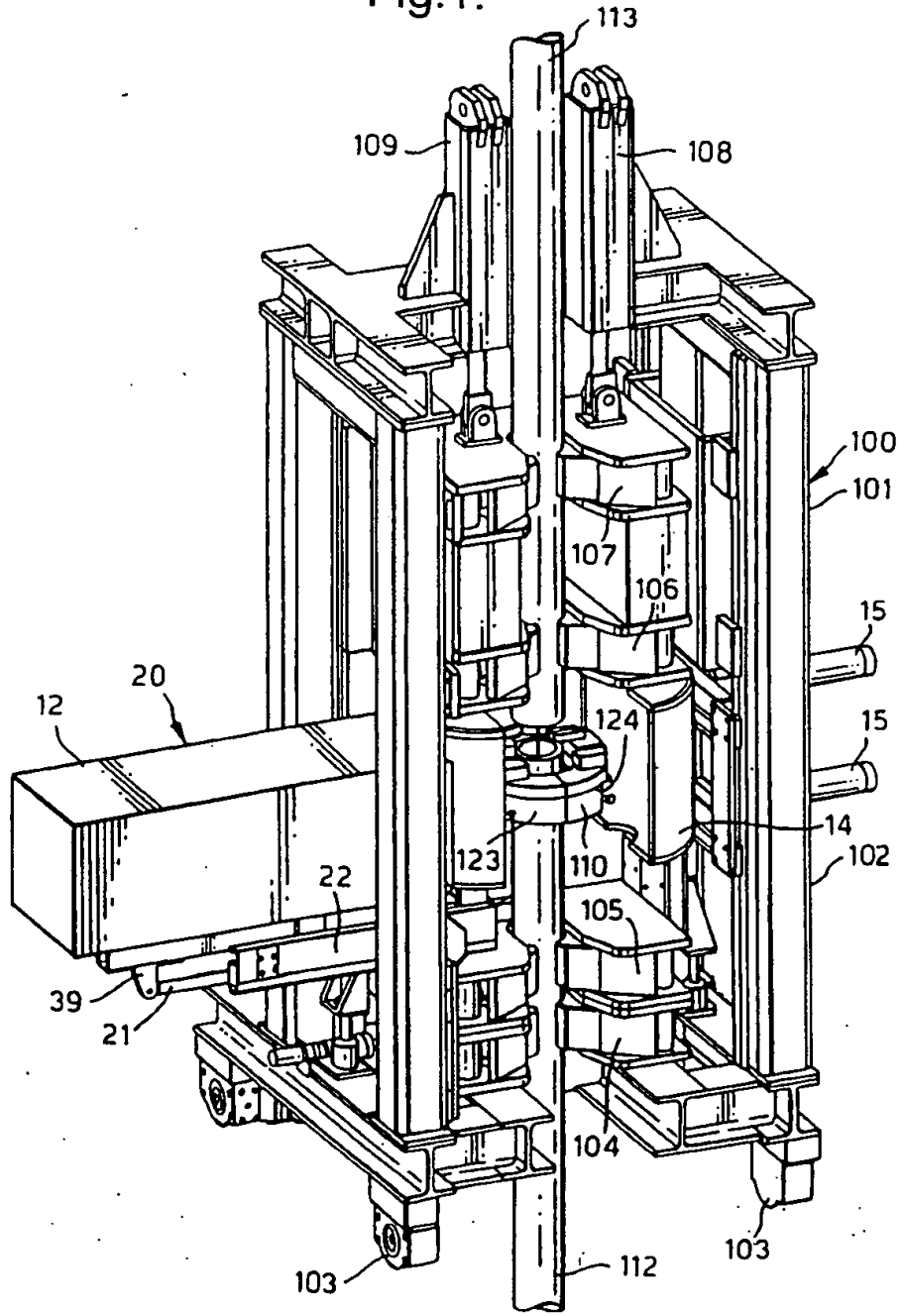


Fig.2.

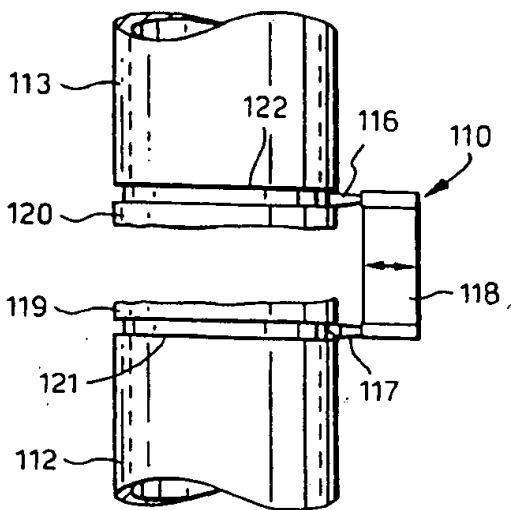
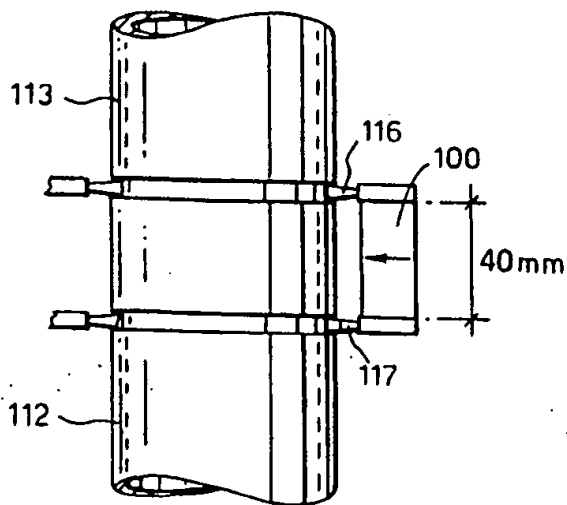


Fig.3.



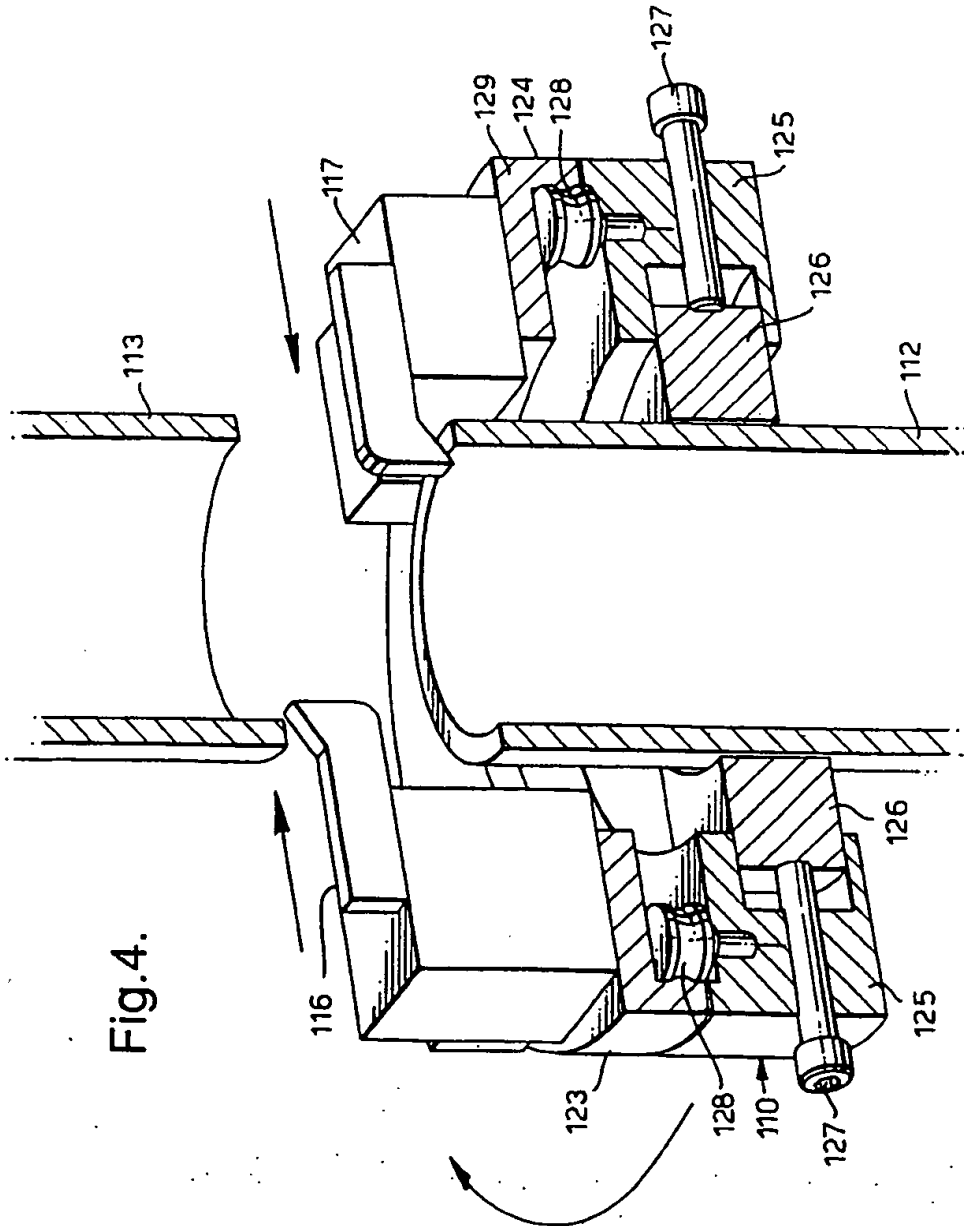
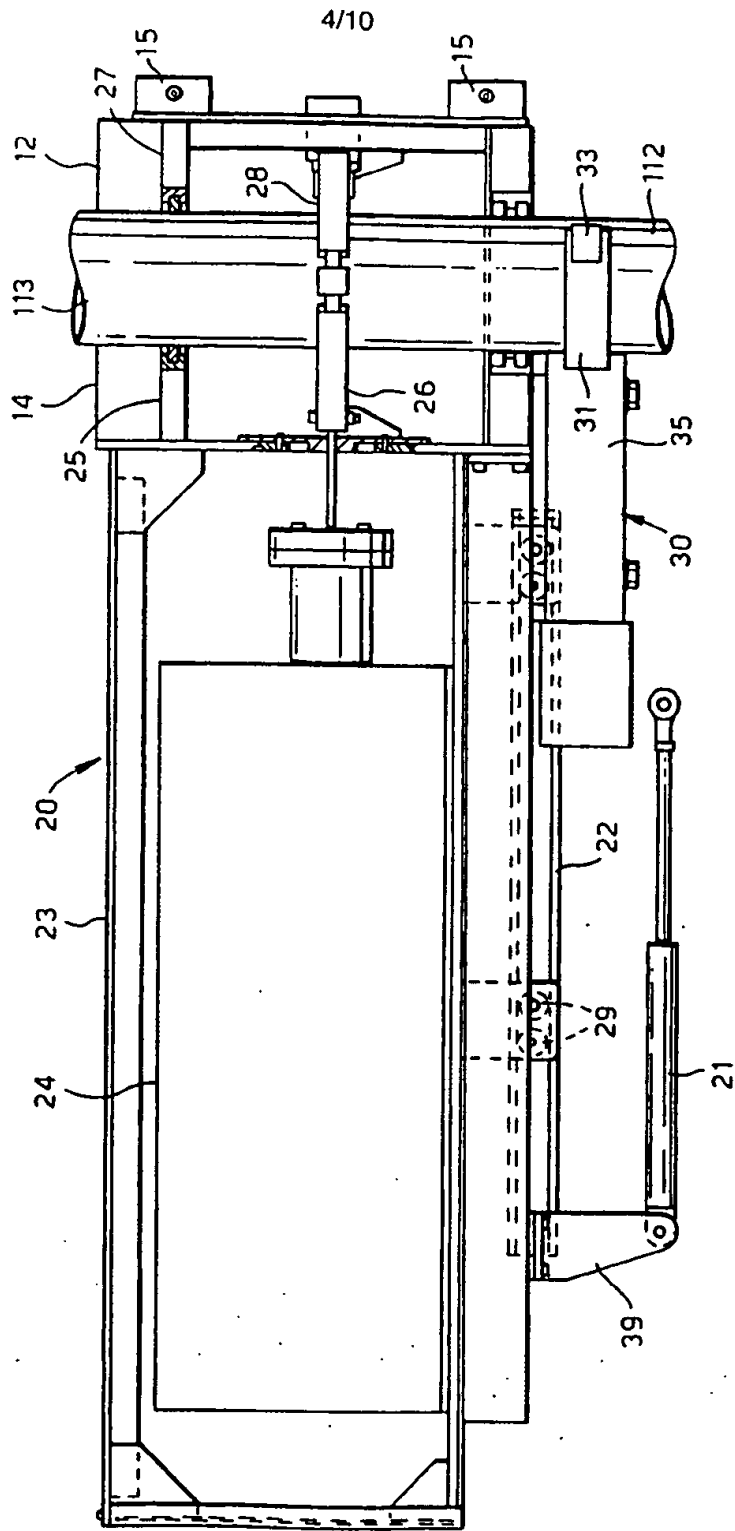


Fig. 4.

Fig. 5.



SUBSTITUTE SHEET (RULE 26)

Fig.6.

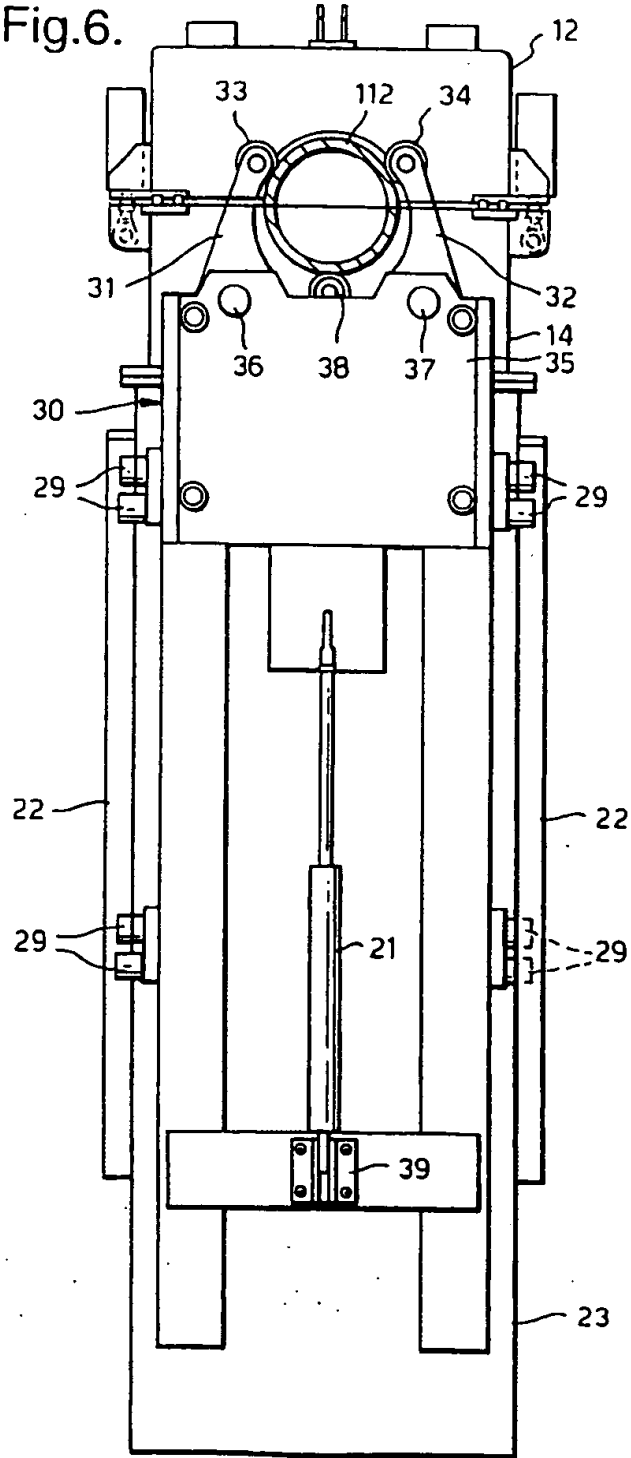


Fig.7.

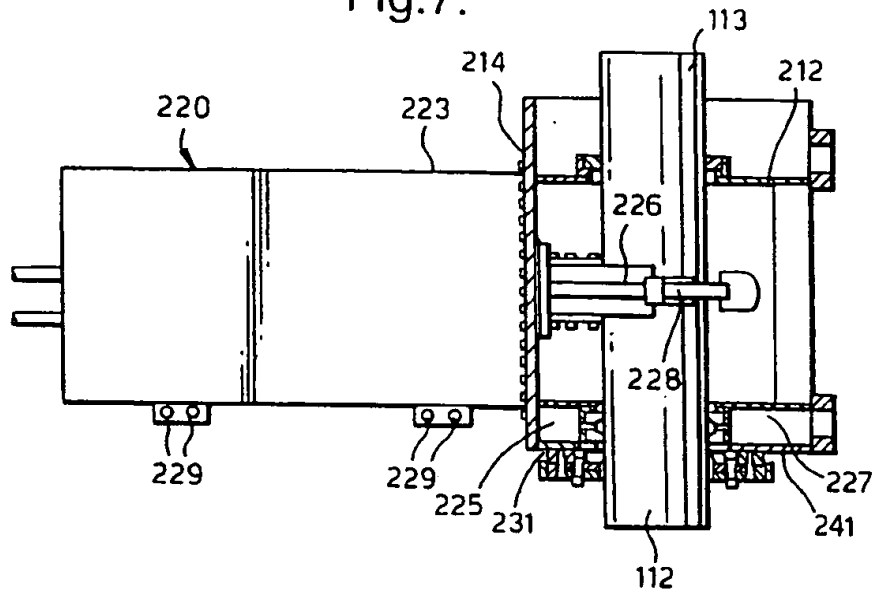
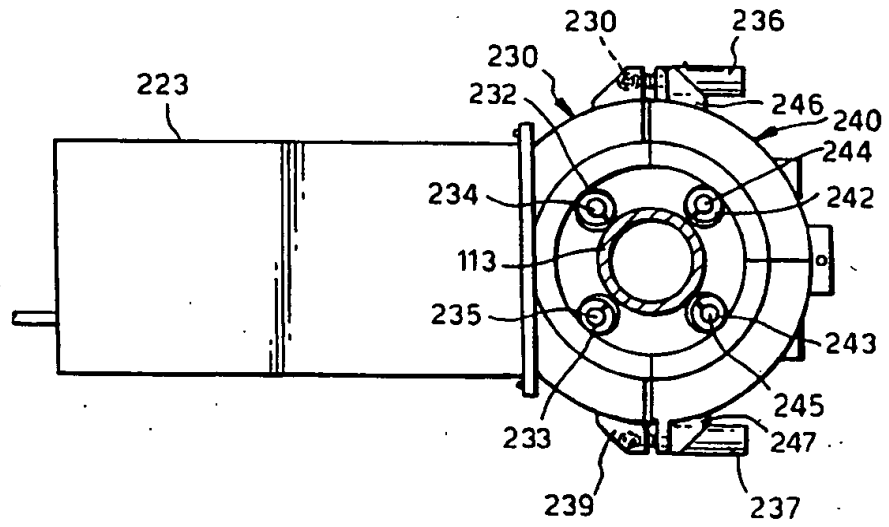


Fig.8.



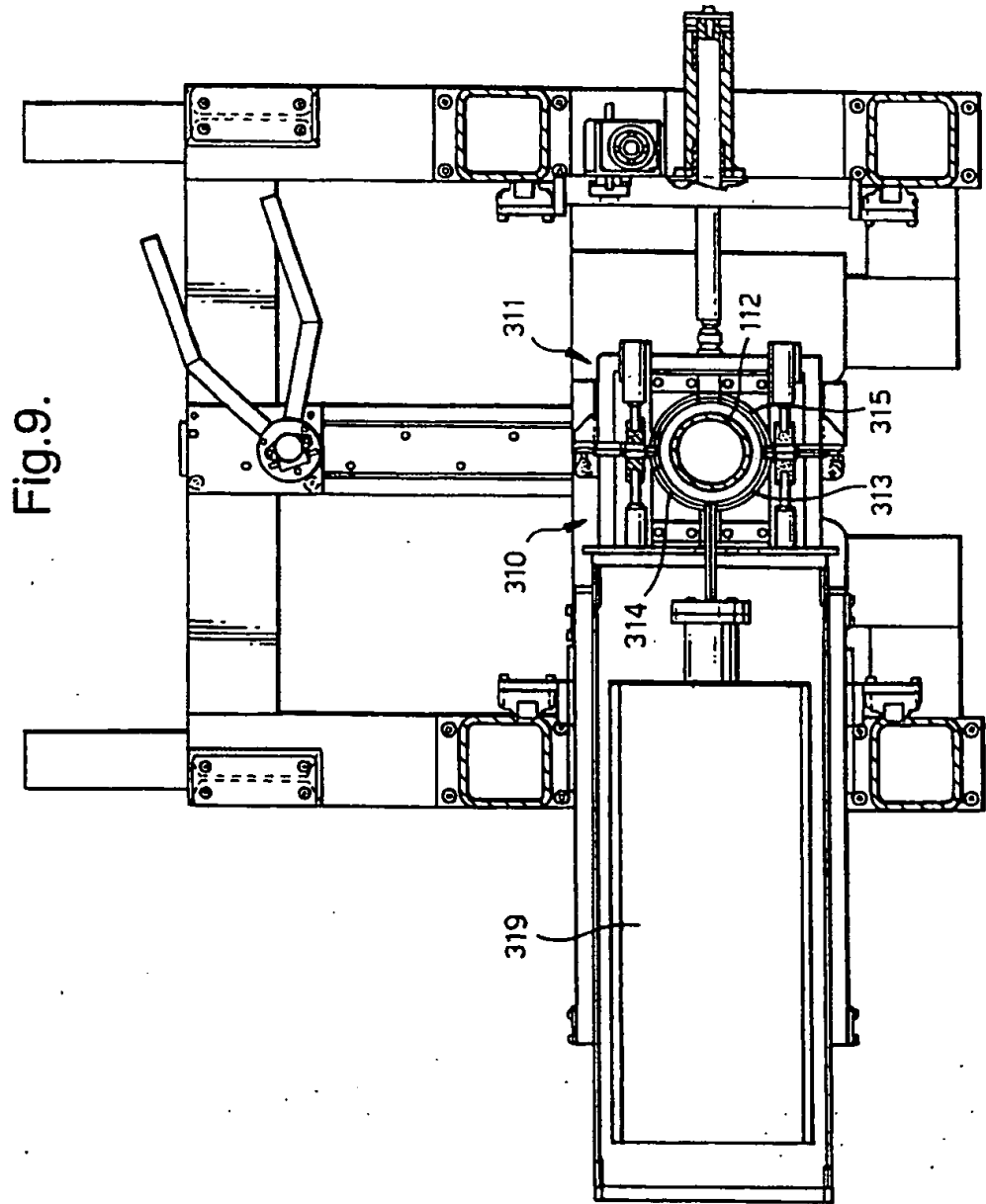


Fig.10.

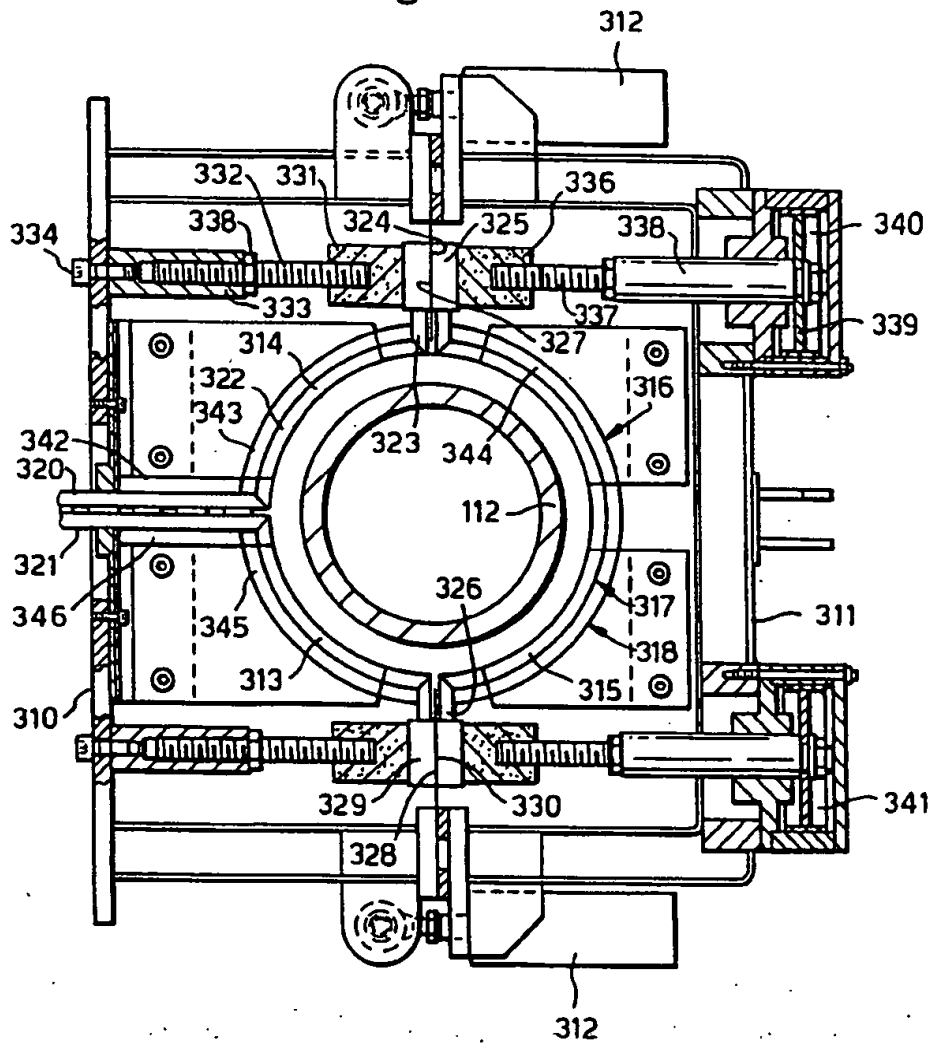


Fig.11.

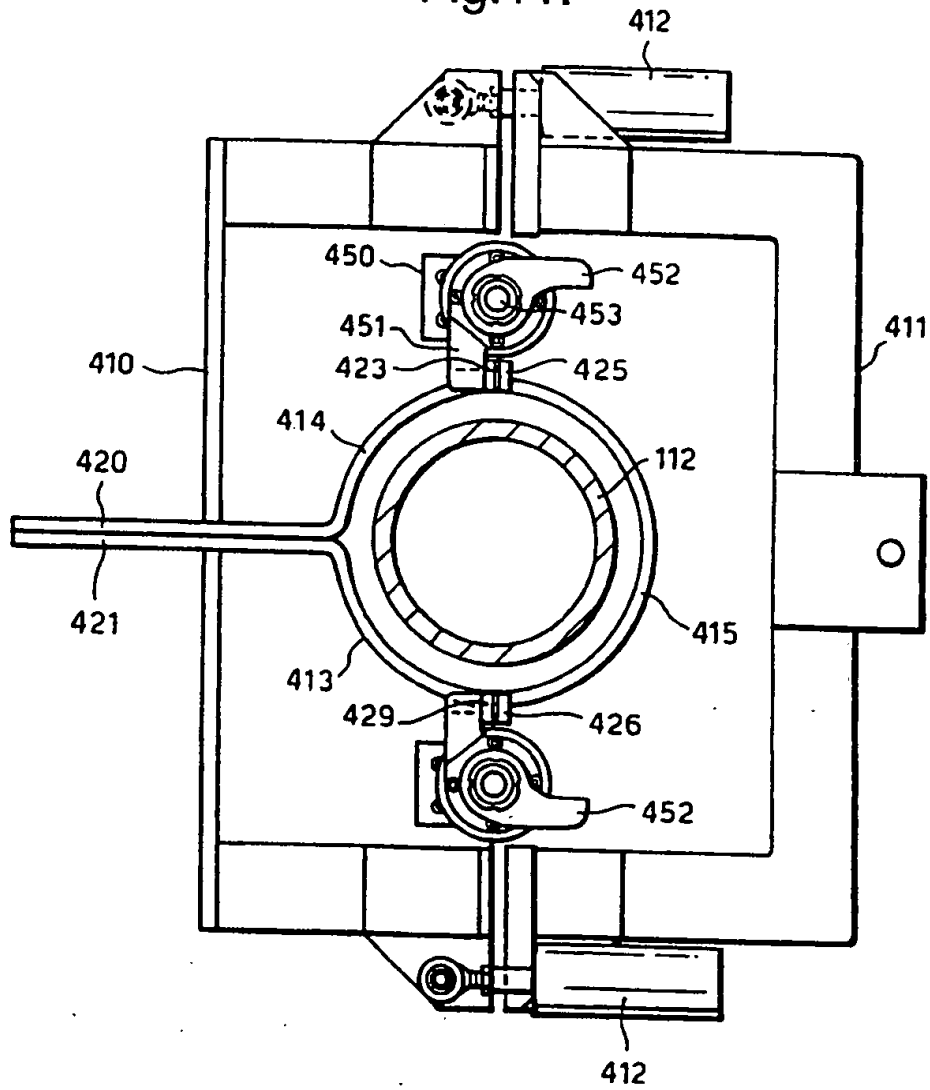
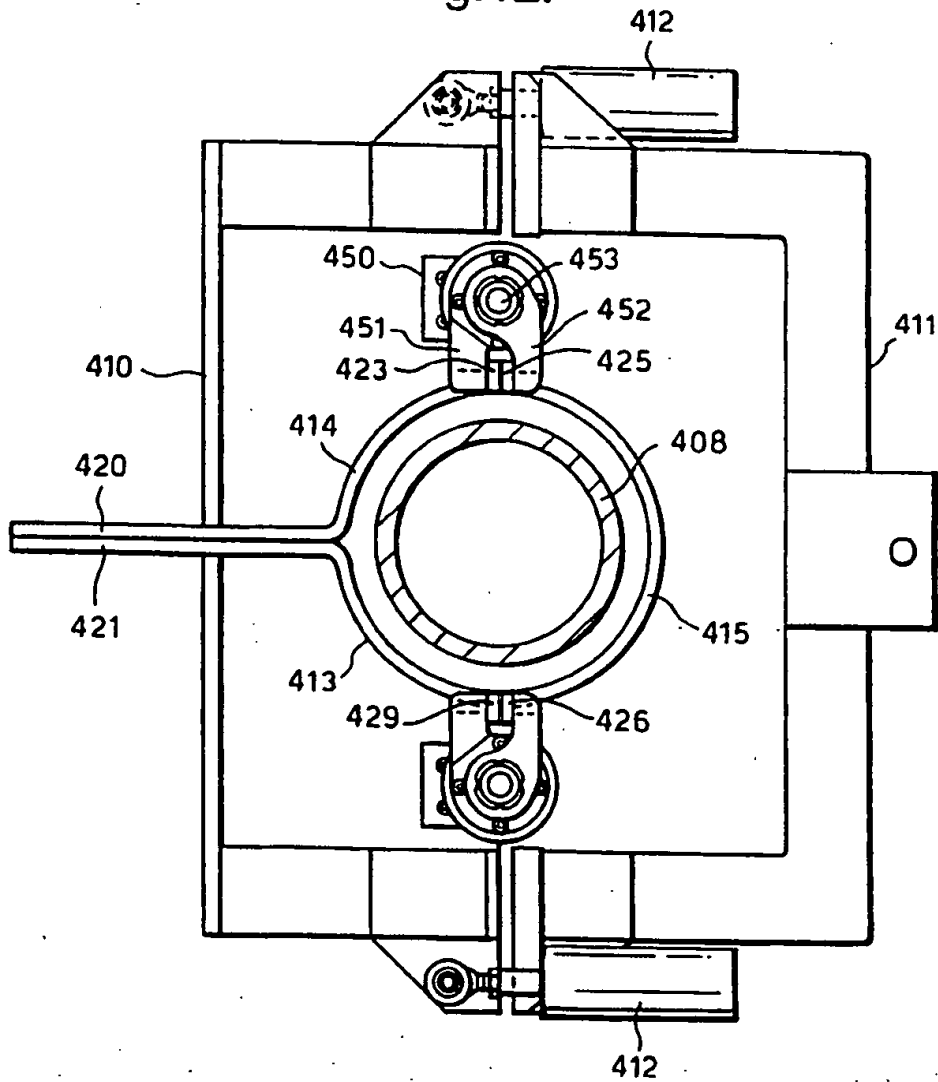


Fig.12.



INTERNATIONAL SEARCH REPORT

Information on patent family members

International Application No

PCT/EP 98/05475

Patent document cited in search report	Publication date	Patent family member(s)	Publication date
EP 0803313 A	29-10-1997	JP 9285876 A	04-11-1997
		JP 9295164 A	18-11-1997
		JP 10006038 A	13-01-1998
		JP 10249549 A	22-09-1998
		JP 10012365 A	16-01-1998
		NO 971847 A	24-10-1998
		EP 0862965 A	09-09-1998
		JP 10305371 A	17-11-1998
		NO 980924 A	08-09-1998
		EP 0865862 A	23-09-1998
		NO 981007 A	11-09-1998
EP 0418606 A	27-03-1991	JP 2819729 B	05-11-1998
		JP 3238169 A	23-10-1991
		JP 2094230 C	02-10-1996
		JP 3086367 A	11-04-1991
		JP 8013428 B	14-02-1996
		DE 69013630 D	01-12-1994
		DE 69013630 T	14-06-1995
		NO 179483 B	08-07-1996
		US 5118028 A	02-06-1992
US 4908491 A	13-03-1990	NO 174242 B	27-12-1993
		CA 1300859 A	19-05-1992
		DE 3871270 A	25-06-1992
		EP 0300005 A	25-01-1989
		WO 8805707 A	11-08-1988

INTERNATIONAL SEARCH REPORT

International Application No
PCT/EP 98/05475

A. CLASSIFICATION OF SUBJECT MATTER IPC 6 B23K20/02 B23K1/002		
According to International Patent Classification (IPC) or to both national classification and IPC		
B. FIELDS SEARCHED Minimum documentation searched (classification system followed by classification symbols) IPC 6 B23K		
Documentation searched other than minimum documentation to the extent that such documents are included in the fields searched		
Electronic data base consulted during the international search (name of data base and, where practical, search terms used)		
C. DOCUMENTS CONSIDERED TO BE RELEVANT		
Category*	Citation of document, with indication, where appropriate, of the relevant passages	Relevant to claim No.
P, X	EP 0 803 313 A (DAIDO STEEL CO LTD) 29 October 1997 see column 10, line 34 - column 11, line 44; figure 1 see column 28, line 2 - line 13; figure 39	1-3, 6, 7, 11, 12
A	EP 0 418 606 A (SUMITOMO METAL IND) 27 March 1991 cited in the application see page 9, line 3-6; figure 1	1-12
A	PATENT ABSTRACTS OF JAPAN vol. 012, no. 057 (M-670), 20 February 1988 & JP 62 203690 A (NIPPON STEEL CORP; OTHERS: 01), 8 September 1987 see abstract	1
--- / ---		
<input checked="" type="checkbox"/> Further documents are listed in the continuation of box C.		<input checked="" type="checkbox"/> Patent family members are listed in annex.
* Special categories of cited documents :		
"A" document defining the general state of the art which is not considered to be of particular relevance "E" earlier document but published on or after the international filing date "L" document which may throw doubts on priority claim(s) or which is cited to establish the publication date of another citation or other special reason (as specified) "O" document referring to an oral disclosure, use, exhibition or other means "P" document published prior to the international filing date but later than the priority date claimed "T" later document published after the international filing date or priority date and not in conflict with the application but cited to understand the principle or theory underlying the invention "X" document of particular relevance; the claimed invention cannot be considered novel or cannot be considered to involve an inventive step when the document is taken alone "Y" document of particular relevance; the claimed invention cannot be considered to involve an inventive step when the document is combined with one or more other such documents, such combination being obvious to a person skilled in the art. "Δ" document member of the same patent family		
Date of the actual completion of the international search	23 December 1998	Date of mailing of the international search report
Name and mailing address of the ISA European Patent Office, P.B. 5818 Patentlaan 2 NL - 2260 HV Rijswijk Tel. (+31-70) 340-2040, Tx. 31 651 epo nl, Fax: (+31-70) 340-3016		Authorized officer Pricolo, G

INTERNATIONAL SEARCH REPORT

International Application No
PCT/EP 98/05475

C. (Continuation) DOCUMENTS CONSIDERED TO BE RELEVANT

Category *	Citation of document, with indication, where appropriate, of the relevant passages	Relevant to claim No.
A	US 4 908 491 A (KNAGENHJELM HANS O) 13 March 1990 see column 6, line 19 - line 35; figures 1,2 -----	1